

Celiac Disease

National Digestive Diseases Information Clearinghouse



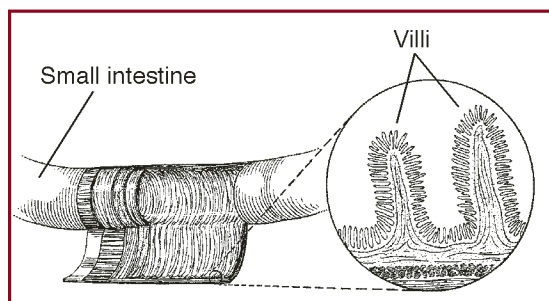
National
Institute of
Diabetes and
Digestive
and Kidney
Diseases

NATIONAL
INSTITUTES
OF HEALTH

What is celiac disease?

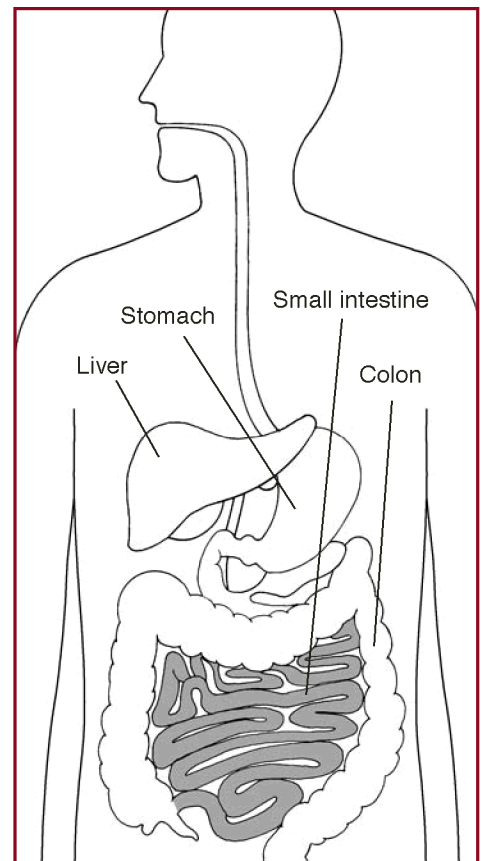
Celiac disease is a digestive disease that damages the small intestine and interferes with absorption of nutrients from food. People who have celiac disease cannot tolerate a protein called gluten, found in wheat, rye, and barley. Gluten is found mainly in foods but may also be found in products we use everyday, such as stamp and envelope adhesive, medicines, and vitamins.

When people with celiac disease eat foods or use products containing gluten, their immune system responds by damaging the small intestine. The tiny, fingerlike protrusions lining the small intestine are damaged or destroyed. Called villi, they normally allow nutrients from food to be absorbed into the bloodstream. Without healthy villi, a person becomes malnourished, regardless of the quantity of food eaten.



Villi on the lining of the small intestine help absorb nutrients.

Because the body's own immune system causes the damage, celiac disease is considered an autoimmune disorder. However, it is also classified as a disease of



The small intestine is shaded above.

malabsorption because nutrients are not absorbed. Celiac disease is also known as celiac sprue, nontropical sprue, and gluten-sensitive enteropathy.

Celiac disease is a genetic disease, meaning it runs in families. Sometimes the disease is triggered—or becomes active for the first time—after surgery, pregnancy, childbirth, viral infection, or severe emotional stress.



U.S. Department
of Health and
Human Services

What are the symptoms of celiac disease?

Celiac disease affects people differently. Symptoms may occur in the digestive system, or in other parts of the body. For example, one person might have diarrhea and abdominal pain, while another person may be irritable or depressed. In fact, irritability is one of the most common symptoms in children.

Symptoms of celiac disease may include one or more of the following:

- gas
- recurring abdominal bloating and pain
- chronic diarrhea
- constipation
- pale, foul-smelling, or fatty stool
- weight loss / weight gain
- fatigue
- unexplained anemia (a low count of red blood cells causing fatigue)
- bone or joint pain
- osteoporosis, osteopenia
- behavioral changes
- tingling numbness in the legs (from nerve damage)
- muscle cramps
- seizures
- missed menstrual periods (often because of excessive weight loss)
- infertility, recurrent miscarriage
- delayed growth
- failure to thrive in infants
- pale sores inside the mouth, called aphthous ulcers
- tooth discoloration or loss of enamel
- itchy skin rash called dermatitis herpetiformis

A person with celiac disease may have no symptoms. People without symptoms are still at risk for the complications of celiac disease, including malnutrition. The longer a person goes undiagnosed and untreated, the greater the chance of developing malnutrition and other complications. Anemia, delayed growth, and weight loss are signs of malnutrition: The body is just not getting enough nutrients. Malnutrition is a serious problem for children because they need adequate nutrition to develop properly. (See Complications.)

Why are celiac disease symptoms so varied?

Researchers are studying the reasons celiac disease affects people differently. Some people develop symptoms as children, others as adults. Some people with celiac disease may not have symptoms, while others may not know that their symptoms are from celiac disease. The undamaged part of their small intestine may not be able to absorb enough nutrients to prevent symptoms.

The length of time a person is breastfed, the age a person started eating gluten-containing foods, and the amount of gluten-containing foods one eats are three factors thought to play a role in when and how celiac disease appears. Some studies have shown, for example, that the longer a person was breastfed, the later the symptoms of celiac disease appear and the more uncommon the symptoms.

How is celiac disease diagnosed?

Recognizing celiac disease can be difficult because some of its symptoms are similar to those of other diseases. In fact, sometimes celiac disease is confused with irritable bowel syndrome, iron-deficiency anemia caused by menstrual blood loss, Crohn's disease, diverticulitis, intestinal infections, and chronic fatigue syndrome. As a result, celiac disease is commonly under diagnosed or misdiagnosed.

Recently, researchers discovered that people with celiac disease have higher than normal levels of certain autoantibodies in their blood. Antibodies are protective proteins produced by the immune system in response to substances that the body perceives to be threatening. Autoantibodies are proteins that react against the body's own molecules or tissues. To diagnose celiac disease, physicians will usually test blood to measure levels of

- Immunoglobulin A (IgA)
- anti-tissue transglutaminase (tTGA)
- IgA anti-endomysium antibodies (AEA)

Before being tested, one should continue to eat a regular diet that includes foods with gluten, such as breads and pastas. If a person stops eating foods with gluten before being tested, the results may be negative for celiac disease even if celiac disease is actually present.

If the tests and symptoms suggest celiac disease, the doctor will perform a small bowel biopsy. During the biopsy, the doctor removes a tiny piece of tissue from the small intestine to check for damage to the villi. To obtain the tissue sample, the doctor eases a long, thin tube called an endoscope through the mouth and stomach into the small intestine. Using instruments passed through the endoscope, the doctor then takes the sample.

Screening

Screening for celiac disease involves testing for the presence of antibodies in the blood in people without symptoms. Americans are not routinely screened for celiac disease. Testing for celiac-related antibodies in children less than 5 years old may not be reliable. However, since celiac disease is hereditary, family members, particularly first-degree relatives—meaning parents, siblings, or children of people who have been diagnosed—may wish to be tested for the disease. About 5 to 15 percent of an affected person's first-degree relatives will also have the disease. About 3 to 8 percent of people with type 1 diabetes will have biopsy-confirmed celiac disease and 5 to 10 percent of people with Down syndrome will be diagnosed with celiac disease.

What is the treatment?

The only treatment for celiac disease is to follow a gluten-free diet. When a person is first diagnosed with celiac disease, the doctor usually will ask the person to work with a dietitian on a gluten-free diet plan. A dietitian is a health care professional who specializes in food and nutrition. Someone with celiac disease can learn from a dietitian how to read ingredient lists and identify foods that contain gluten in order to make informed decisions at the grocery store and when eating out.

For most people, following this diet will stop symptoms, heal existing intestinal damage, and prevent further damage. Improvements begin within days of starting the diet. The small intestine is usually healed in 3 to 6 months in children and younger adults and within 2 years for older adults. Healed means a person now has villi that can absorb nutrients from food into the bloodstream.

In order to stay well, people with celiac disease must avoid gluten for the rest of their lives. Eating any gluten, no matter how small an amount, can damage the small intestine. The damage will occur in anyone with the disease, including people without noticeable symptoms. Depending on a person's age at diagnosis, some problems will not improve, such as delayed growth and tooth discoloration.

Some people with celiac disease show no improvement on the gluten-free diet. This condition is called unresponsive celiac disease. The most common reason for poor response is that small amounts of gluten are still present in the diet. Advice from a dietitian who is skilled in educating patients about the gluten-free diet is essential to achieve the best results.

Rarely, the intestinal injury will continue despite a strictly gluten-free diet. People in this situation have severely damaged intestines that cannot heal. Because their intestines are not absorbing enough nutrients, they may need to receive nutrients directly into their bloodstream through a vein (intravenously). People with this condition may need to be evaluated for complications of the disease. Researchers are now evaluating drug treatments for unresponsive celiac disease.

The web contains information about celiac disease, some of which is not accurate. The best people for advice about diagnosing and treating celiac disease are one's doctor and dietitian.

The Gluten-Free Diet

A gluten-free diet means not eating foods that contain wheat (including spelt, triticale, and kamut), rye, and barley. The foods and products made from these grains are also not allowed. In other words, a person with celiac disease should not eat most grain, pasta, cereal, and many processed foods. Despite these restrictions, people with celiac disease can eat a well-balanced diet with a variety of foods, including gluten-free bread and pasta. For example, people with celiac disease can use potato, rice, soy, amaranth, quinoa, buckwheat, or bean flour instead of wheat flour. They can buy gluten-free bread, pasta, and other products from stores that carry organic foods, or order products from special food companies. Gluten-free products are increasingly available from regular stores.

Checking labels for “gluten free” is important since many corn and rice products are produced in factories that also manufacture wheat products. Hidden sources of gluten include additives such as modified food starch, preservatives, and stabilizers. Wheat and wheat products are often used as thickeners, stabilizers, and texture enhancers in foods.

“Plain” meat, fish, rice, fruits, and vegetables do not contain gluten, so people with celiac disease can eat as much of these foods as they like. Recommending that people with celiac disease avoid oats is controversial because some people have been able to eat oats without having symptoms. Scientists are currently studying whether people with celiac disease can tolerate oats. Until the studies are complete, people with celiac disease should follow their physician’s or dietitian’s advice about eating oats. Examples of foods that are safe to eat and those that are not are provided in the table on pages 6–7.

The gluten-free diet is challenging. It requires a completely new approach to eating that affects a person’s entire life. Newly diagnosed people and their families may find support groups to be particularly helpful as they learn to adjust to a new way of life. People with celiac disease have to be extremely careful about what they buy for lunch at school or work, what they purchase at the grocery store, what they eat at restaurants or parties, or what they grab for a snack. Eating out can be a challenge. If a person with celiac disease is in doubt about a menu item, ask the waiter or chef about ingredients and preparation, or if a gluten-free menu is available.

Gluten is also used in some medications. One should check with the pharmacist to learn whether medications used contain gluten. Since gluten is also sometimes used as an additive in unexpected products, it is important to read all labels. If the ingredients are not listed on the product label, the manufacturer of the product should provide the list upon request. With practice, screening for gluten becomes second nature.

The Gluten-Free Diet: Some Examples

Following are examples of foods that are allowed and those that should be avoided when eating a gluten-free diet. This list is *not* complete, so people with celiac disease should discuss gluten-free food choices with a dietitian or physician who specializes in celiac disease. People with celiac disease should always read food ingredient lists carefully to make sure that the food does not contain gluten.

Food Categories	Foods Allowed or Recommended	Foods to Omit	Tips
Breads, cereals, rice, and pasta: 6 to 11 servings each day			
Serving size = 1 slice bread, 1 cup ready-to-eat cereal, ½ cup cooked cereal, rice, or pasta; ½ bun, bagel, or English muffin	Bread made from corn, rice, soy, arrowroot corn, or potato starch; pea, potato, or whole-bean flour; or tapioca, sago, rice bran, cornmeal, buckwheat, millet, flax, teff, sorghum, amaranth, quinoa Hot cereals made from soy, hominy, hominy grits, brown rice, white rice, buckwheat groats, millet, cornmeal, quinoa flakes Puffed corn, rice, or millet, other rice and corn made with allowed ingredients Rice, rice noodles, pastas made from allowed ingredients Some rice crackers and cakes, popped corn cakes made from allowed ingredients	Breads or baked products containing wheat, rye, triticale, barley, oats, wheat germ, bran; graham, gluten, or durum flour; wheat starch, oat bran, bulgur, farina, wheat-based semolina, spelt, kamut Cereals made from wheat, rye, triticale, barley, and oats; or made with malt extract, malt flavorings Pastas made from ingredients above Most crackers	Use corn, rice, soy, arrowroot, tapioca, and potato flours or a mixture of them instead of wheat flours in recipes. Experiment with gluten-free products. Look for gluten-free products at the supermarket, health food store, or directly from the manufacturer.
Food Categories	Foods Recommended	Foods to Omit	Tips
Vegetables: 3 to 5 servings each day (includes starchy vegetables)			
Serving size = 1 cup raw leafy, ½ cup cooked or chopped, ⅓ cup juice	All plain, fresh, frozen, or canned vegetables made with allowed ingredients	Any creamed or breaded vegetables (unless allowed ingredients are used); canned baked beans Some french fries	Buy plain, frozen, or canned vegetables seasoned with herbs, spices, or sauces made with allowed ingredients.
Food Categories	Foods Recommended	Foods to Omit	Tips
Fruits: 2 to 4 servings each day			
Serving size = 1 medium size, ½ cup canned, ⅓ cup juice, ¼ cup dried	All fruits and fruit juices	Some commercial fruit pie fillings, dried fruit	

Food Categories	Foods Allowed or Recommended	Foods to Omit	Tips
Milk, yogurt, and cheese: 2 to 3 servings each day			
Serving size = 1 cup milk or yogurt, 1½ oz natural cheese, 2 oz processed cheese	All milk and milk products except those made with gluten additives Aged cheese	Malted milk Some milk drinks, flavored or frozen yogurt	Contact the food manufacturer for product information if the ingredients are not listed on the label.
Food Categories	Foods Recommended	Foods to Omit	Tips
Meats, poultry, fish, dry beans and peas, eggs, and nuts: 2 to 3 servings or total of 6 oz daily			
Serving size = 2 to 3 oz cooked; count 1 egg, ½ cup cooked beans, 2 Tbsp peanut butter, or ¼ cup nuts as 1 oz of meat	All meat, poultry, fish, shellfish, eggs Dry peas and beans, nuts, peanut butter, soybeans Cold cuts, frankfurters, sausage without fillers	Any prepared with wheat, rye, oats, barley, gluten stabilizers, fillers including some frankfurters, cold cuts, sandwich spreads, sausages, canned meats Self-basting turkey Some egg substitutes	When dining out, select meat, poultry, or fish made without breading, gravies, or sauces.
Food Categories	Foods Recommended	Foods to Omit	Tips
Fats, snacks, sweets, condiments, and beverages			
	Butter, margarine, salad dressings, sauces, soups, desserts made with allowed ingredients Sugar, honey, jelly, jam, hard candy, plain chocolate, coconut, molasses, marshmallows, meringues Pure instant or ground coffee, tea, carbonated drinks, wine (made in United States), rum, alcohol distilled from cereals such as gin, vodka, whiskey Most seasonings and flavorings	Commercial salad dressings, prepared soups, condiments, sauces, seasonings prepared with ingredients listed above Hot cocoa mixes, nondairy cream substitutes, flavored instant coffee, herbal tea Beer, ale, malted beverages Licorice	Store all gluten-free products in your refrigerator or freezer because they do not contain preservatives. Avoid sauces, gravies, canned fish, products with hydrolyzed vegetable protein or hydrolyzed plant protein (HVP/HPP) made from wheat protein, and anything with questionable ingredients.

2001, the American Dietetic Association. "Patient Education Materials: Supplement to the Manual of Clinical Dietetics." 3rd ed. Used with permission.

What are the complications of celiac disease?

Damage to the small intestine and the resulting nutrient absorption problems put a person with celiac disease at risk for malnutrition, anemia, and several other diseases and health problems.

- **Lymphoma and adenocarcinoma** are cancers that can develop in the intestine.
- **Osteoporosis** is a condition in which the bones become weak, brittle, and prone to breaking. Poor calcium absorption contributes to osteoporosis.
- **Miscarriage and congenital malformation** of the baby, such as neural tube defects, are risks for pregnant women with untreated celiac disease because of nutrient absorption problems.
- **Short stature** refers to being significantly under-the-average height. Short stature results when childhood celiac disease prevents nutrient absorption during the years when nutrition is critical to a child's normal growth and development. Children who are diagnosed and treated before their growth stops may have a catch-up period.

How common is celiac disease?

Data on the prevalence of celiac disease is spotty. In Italy about 1 in 250 people, and in Ireland about 1 in 300 people, have celiac disease. Recent studies have shown that it may be more common in Africa, South America, and Asia than previously believed.

Until recently, celiac disease was thought to be uncommon in the United States. However, studies have shown that celiac disease is very common. Recent findings estimate about 2 million people in the United States have celiac disease, or about 1 in 133 people. Among people who have a first-degree relative diagnosed with celiac disease, as many as 1 in 22 people may have the disease.

Celiac disease could be under diagnosed in the United States for a number of reasons including:

- Celiac symptoms can be attributed to other problems.
- Many doctors and health care providers are not knowledgeable about the disease.
- Only a small number of U.S. laboratories are experienced and skilled in testing for celiac disease.

More research is needed to learn the true prevalence of celiac disease among Americans.

Diseases Linked to Celiac Disease

People with celiac disease tend to have other autoimmune diseases. The connection between celiac disease and these diseases may be genetic. These diseases include

- thyroid disease
- systemic lupus erythematosus
- type 1 diabetes
- liver disease
- collagen vascular disease
- rheumatoid arthritis
- Sjögren's syndrome

Dermatitis Herpetiformis

Dermatitis herpetiformis (DH) is a severe itchy, blistering skin manifestation of celiac disease. Not all people with celiac disease develop dermatitis herpetiformis. The rash usually occurs on the elbows, knees, and buttocks. Unlike other forms of celiac disease, the range of intestinal abnormalities in DH is highly variable, from minimal to severe. Only about 20 percent of people with DH have intestinal symptoms of celiac disease.

To diagnose DH, the doctor will test the person's blood for autoantibodies related to celiac disease and will biopsy the person's skin. If the antibody tests are positive and the skin biopsy has the typical findings of DH, patients do not need to have an intestinal biopsy. Both the skin disease and the intestinal disease respond to a gluten-free diet and recur if gluten is added back into the diet. In addition, the rash symptoms can be controlled with medications such as dapsone (4',4'diaminodiphenylsufone). However, dapsone does not treat the intestinal condition and people with DH should also maintain a gluten-free diet.

Hope Through Research

The National Institute of Diabetes and Digestive and Kidney Diseases (NIDDK) conducts and supports research on celiac disease. NIDDK-supported researchers are studying the genetic and environmental causes of celiac disease. In addition, researchers are studying the substances found in gluten that are believed to be responsible for the destruction of the immune system function, as happens in celiac disease. They are engineering enzymes designed to destroy these immunotoxic peptides. Researchers are also developing educational materials for standardized medical training to raise awareness among healthcare providers. The hope is that increased understanding and awareness will lead to earlier diagnosis and treatment of celiac disease.

The U.S. Government does not endorse or favor any specific commercial product or company. Trade, proprietary, or company names appearing in this document are used only because they are considered necessary in the context of the information provided. If a product is not mentioned, the omission does not mean or imply that the product is unsatisfactory.

Points to Remember

- People with celiac disease cannot tolerate gluten, a protein in wheat, rye, barley, and possibly oats.
- Untreated celiac disease damages the small intestine and interferes with nutrient absorption.
- Without treatment, people with celiac disease can develop complications like cancer, osteoporosis, anemia, and seizures.
- A person with celiac disease may or may not have symptoms.
- Diagnosis involves blood tests and a biopsy of the small intestine.
- Since celiac disease is hereditary, family members of a person with celiac disease may wish to be tested.
- Celiac disease is treated by eliminating all gluten from the diet. The gluten-free diet is a lifetime requirement.
- A dietitian can teach a person with celiac disease food selection, label reading, and other strategies to help manage the disease.

For More Information

American Dietetic Association

120 South Riverside Plaza, Suite 2000
Chicago, IL 60606-6995
Phone: 1-800-366-1655 or 1-800-877-1600
Email: hotline@eatright.org
Internet: www.eatright.org

Celiac Disease Foundation

13251 Ventura Boulevard, #1
Studio City, CA 91604
Phone: 818-990-2354
Fax: 818-990-2379
Email: cdf@celiac.org
Internet: www.celiac.org



Celiac Sprue Association/USA Inc.

P.O. Box 31700
Omaha, NE 68131-0700
Phone: 1-877-272-4272 or 402-558-0600
Fax: 402-558-1347
Email: celiacs@csaceliacs.org
Internet: www.csaceliacs.org

Gluten Intolerance Group of North America

15110 10th Avenue, SW., Suite A
Seattle, WA 98166
Phone: 206-246-6652
Fax: 206-246-6531
Email: info@gluten.net
Internet: www.gluten.net

National Foundation for Celiac Awareness

124 South Maple Street
Ambler, PA 19002
Phone: 215-325-1306
Email: info@celiacawareness.org
Internet: www.celiacawareness.org

North American Society for Pediatric Gastroenterology, Hepatology and Nutrition (NASPGHAN)

P.O. Box 6
Flourtown, PA 19031
Phone: 215-233-0808
Fax: 215-233-3918
Email: naspghan@naspghan.org
Internet: www.naspghan.org
www.cdhnf.org

National Digestive Diseases Information Clearinghouse

2 Information Way
Bethesda, MD 20892-3570
Phone: 1-800-891-5389
Fax: 703-738-4929
Email: nddic@info.niddk.nih.gov
Internet: www.digestive.niddk.nih.gov

The National Digestive Diseases Information Clearinghouse (NDDIC) is a service of the National Institute of Diabetes and Digestive and Kidney Diseases (NIDDK). The NIDDK is part of the National Institutes of Health under the U.S. Department of Health and Human Services. Established in 1980, the Clearinghouse provides information about digestive diseases to people with digestive disorders and to their families, health care professionals, and the public. The NDDIC answers inquiries, develops and distributes publications, and works closely with professional and patient organizations and Government agencies to coordinate resources about digestive diseases.

Publications produced by the Clearinghouse are carefully reviewed by both NIDDK scientists and outside experts. This fact sheet was reviewed by Ciaran Kelly, M.D., Beth Israel Deaconess Medical Center; Mitchell Cohen, M.D., Cincinnati, Children's Hospital Medical Center; Walter Reed Army Medical Center; National Foundation for Celiac Awareness; Celiac Disease Foundation; Celiac Sprue Association/USA Inc.; and Centers for Disease Control and Prevention staff.

This publication is not copyrighted. The Clearinghouse encourages users of this fact sheet to duplicate and distribute as many copies as desired.

This fact sheet is also available at
www.digestive.niddk.nih.gov.



U.S. DEPARTMENT OF HEALTH
AND HUMAN SERVICES
National Institutes of Health

NIH Publication No. 06-4269
October 2005